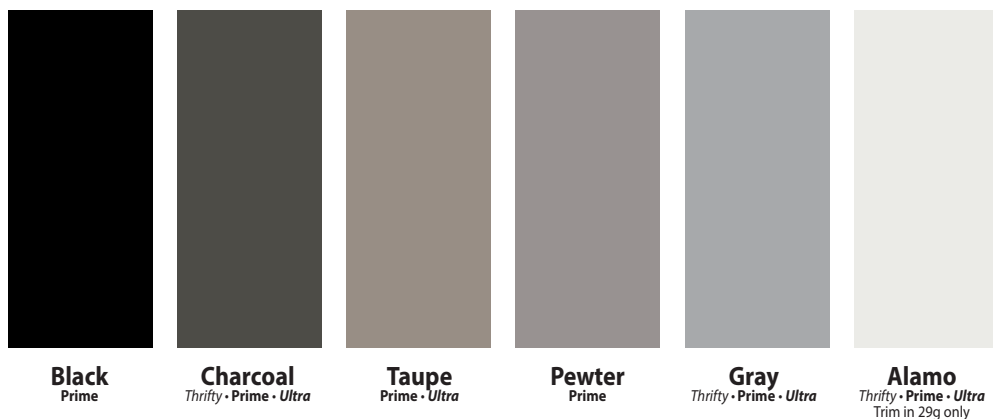


DO NOT USE FOR COLOR MATCHING

This digital color chart is to be used for approximations of our metal colors only.

It is intended to be viewed on a computer monitor. Colors will vary depending on your computer monitor and monitor settings. Please ask for a printed color chart or an actual metal sample for color matching purposes.



Brilliant/Arctic
Thrifty • Prime • Ultra
Brilliant Prime uses G90 substrate.
Contact your sales person for accurate pricing.



Forest
Prime • Ultra



Hunter
Thrifty • Prime • Ultra



Colony
Prime



Gold
Prime



Crimson
Prime • Ultra



Rustic
Thrifty • Prime • Ultra



Burgundy
Prime • Ultra



Gallery
Prime • Ultra



Ocean
Prime • Ultra
Trim in 29g only



Ivory
Prime



Light Stone
Thrifty • Prime • Ultra

CentralGuard® powered by **valspar**

Panel-Loc Plus™

Color Selection Tool

Including Panel-Loc



LO-PLPN14



www.centralstatesmfg.com



ENERGY STAR RATED
All colors meet ENERGY STAR® requirements for steep slope roofs.

* Kynar 500®/Hylar 5000® color. Contact your sales person for accurate pricing. Color variation between orders is normal and not cause for rejection. Panels manufactured in Copper Metallic must be installed in the same direction. See directional arrows or stickers provided on your panels. Copper Metallic available in Prime Only.

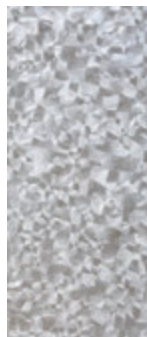
† Weathering and appearance variation, including color, sheen, and spangle, is common in non-painted materials and is not a cause for rejection. For consistent appearance, choose a paint-finished product.*

CentralGuard is a trademark of Central States Manufacturing, Inc.

Galvanized†
Prime
Clear Acrylic coating
NOT ENERGY STAR RATED



Galvalume†
Prime • Ultra
Clear Acrylic coating
NOT ENERGY STAR RATED



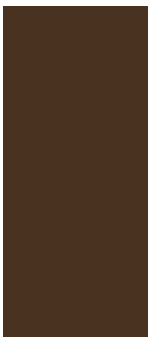
Copper Metallic*
29g Galvalume
Kynar 500®/Hylar 5000®



Burnished Slate
Prime • Ultra



Brown
Thrifty • Prime • Ultra



Tan
Thrifty • Prime • Ultra



Panel-Loc Plus



Choose the right option to fit your needs

		Fade Resistance	Dent Resistance	Rust Resistance	Warranty
Ultra 26 Gauge Premium Option	For a small amount more than Prime, move up to <i>Ultra</i> .	40% More Resistance than Thrifty	220% More Resistance than Thrifty	Added rust-through resistance	Rust-Through 20 Year Chalk & Fade 30 Year Paint Adhesion 40 Year
Prime 29 Gauge The industry leader	For a small amount more than <i>Thrifty</i> , move up to Prime.	40% More Resistance Than Thrifty	25% More Resistance Than Thrifty	Added rust-through resistance	Rust-Through 20 Year Chalk & Fade 30 Year Paint Adhesion 40 Year
Thrifty 29 Gauge	Our least expensive option	Basic Resistance	Basic Resistance	Basic Resistance	Rust-Through None Chalk & Fade None Paint Adhesion 20 Year

Ultra Panel-Loc Plus features UL2218 approval for impact resistance and may qualify for a home owner's insurance discount. See your local insurance agent for qualifications.

Its not just paint... Its a formula for protection.

CentralGuard® Layers of premium protection

Top Coat Beauty & Protection
Primer Paint adherence
Galvalume or Galvanized Rust resistance
Steel Dent resistance
Primer Paint adherence
Backer Backside Protection



CentralGuard combines the durability of ceramic and select inorganic pigments with the strength of a proprietary silicone polyester resin to deliver a durable finish, no matter the weather.

- Ceramic pigments are practically unaffected by acid rain and pollution.
- They resist color fade even in the most hostile environments
- Silicone polyester resin resist dirt, staining and abrasion
- Excellent fade and chalk resistance

The result is one tough paint that will endure the physical stresses of the elements.

For more information including additional **Fade, Dent and Rust** literature go to:

centralstatesmfg.com/resources/literature/

Some metal fades by comparison. Choose your material carefully.

	Brand New Roof Just installed Perfect Color Match	After 7 Years No noticeable color change. Still looks new.	After 15 Years Still no apparent color change. Curb appeal is still strong	After 22 Years Minimal color change. Your home still looks great.	After 30 Years Still barely noticeable. Roof will look great for years to come.
Why choose CentralGuard®? Sunlight, UV rays, acid rain, ice and snow make most roofs fade faster. CentralGuard offers superior resistance to fade, dirt and rust.	CentralGuard® by Central States				
	FADE	FADE	FADE	FADE	FADE
	Other Metal Roofs				
	Brand New Roof Just installed Perfect Color Match	After 7 Years A slight discoloration is beginning to be noticeable	After 15 Years Significant fade, noticeable in shaded areas. Energy savings is decreased.	After 22 Years Very noticeable color change. Roof looks faded and old.	After 30 Years Overdue to replace. This time call Central States



For more information, go to www.allmetalnotequal.com